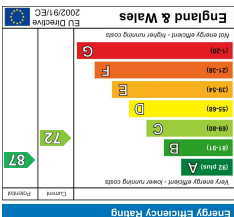
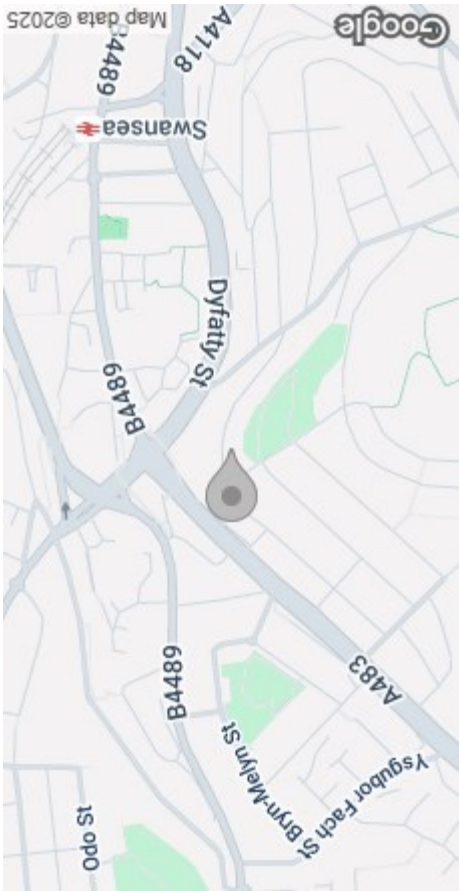


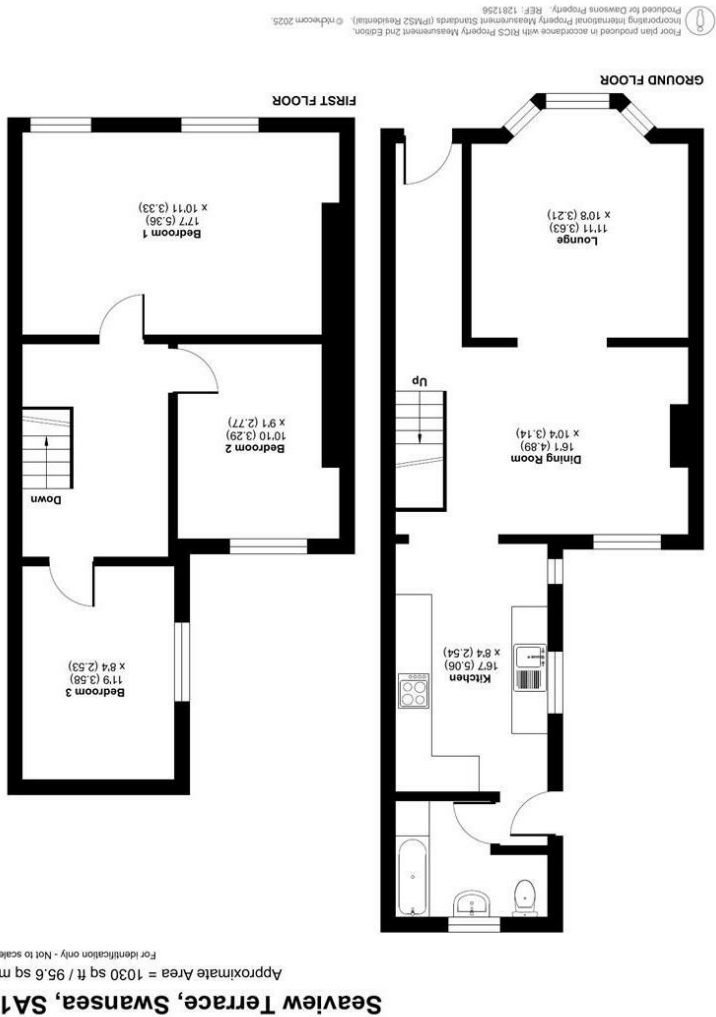
These particulars, whilst believed to be accurate are set out as a general outline only for guidance and do not constitute any part of an offer or contract. Intending purchasers should not rely on them as statements or representations of fact, but must satisfy themselves by inspection or otherwise as to their accuracy. No person in this firm's employment has the authority to make or give any representation or warranty in respect of the property.



EPC



AREA MAP



FLOOR PLAN



GENERAL INFORMATION

Dawsons are pleased to offer for sale this well-presented mid-terrace property, ideally located in the central and popular area of Mount Pleasant, Swansea.

The ground floor accommodation comprises a welcoming entrance hallway, a spacious lounge opening into a dining area, a modern fitted kitchen, and a bathroom. To the first floor, there are three well-proportioned bedrooms, offering comfortable living space for families or first-time buyers.

Externally, the property benefits from a front forecourt and an enclosed rear patio garden—ideal for low-maintenance outdoor living.

Superbly positioned close to Swansea City Centre, the home also offers excellent transport links to Swansea Train Station, Morfa Retail Park, and Swansea Beach.

An ideal opportunity for first-time buyers, families, or investors. Viewing is highly recommended to appreciate the full potential of this lovely home.

FULL DESCRIPTION

Ground Floor

Entrance

Lounge
11'10" x 10'6" (3.63m x 3.21m)

Dining room
16'0" x 10'3" (4.89m x 3.14m)

Kitchen
16'7" x 8'3" (5.06m x 2.54m)

Bathroom

First Floor

Landing



Bedroom 1
17'7" x 10'11" (5.36m x 3.33m)

Bedroom 2
10'9" x 9'1" (3.29m x 2.77m)

Bedroom 3
11'8" x 8'3" (3.58m x 2.53m)

External

Front Forecourt

Enclosed Rear Patio Garden

Tenure - Freehold

Council Tax Band - C

EPC - C

Services

Mains Gas & Electric
Mains Sewerage

Water - Metered

Broadband – The current supplier
Virgin. Type - Fibre

Mobile - There are no known issues
with mobile coverage using the
vendor's current supplier, [EE].

